

## Product Description

Product	Premium Lavender
SKU	HN1000L-Lav
Product Form	2 oz jar
Packaging, Closure	White cap, protective liner
Storage Condition	RT
Lot #	CBD-L-Lav-220115

## Physical

Attribute	Method/SOP	Specification	Test Result
Product Color	Organoleptic	white	Pass
Product Odor	Organoleptic	Lavender	Pass
Product Weight Variation	Sample	51-54 g	Pass

## Purity/Strength


Ingredients	Label Claim	Specification	Test Result
CBD	1000 mg/50g	1.9% to 2.5%	2.46%
THC	< 0.3%	< 0.3%	<0.01%
Other ingredients	Shea Butter, Coconut Oil, Lotion Base, Fragrance		

## Identification/Chemical/Heavy Metals

Attribute	Method	Specification	Test Result
Identity	HPLC	Matches reference std	Matches reference
CBD	HPLC	>1.9%	2.46%
Other			
Arsenic	ICPMS per USP 2232	<2000 PPB	<51 PPB
Cadmium	ICPMS per USP 2232	<820 PPB	<51 PPB
Mercury	ICPMS per USP 2232	<400 PPB	<51 PPB
Lead	ICPMS per USP 2232	<1200 PPB	<51 PPB

## Microbiology

Attribute	Method	Specification	Test Result
Total Aerobic	USP/AOAC/FDA BAM	< 1x 10 <sup>3</sup> CFU/g	None Detected
Total Yeast & Mold	USP/AOAC/FDA BAM	< 1x 10 <sup>2</sup> CFU/g	None Detected
Bile Tolerant gram neg.	USP/AOAC/FDA BAM	< 1x 10 <sup>2</sup> CFU/g	None Detected
E. coli	USP/AOAC/FDA BAM	None Detected	None Detected

QA Approval:		Date:	7/7/2022
--------------	---	-------	----------

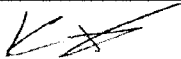
## COA Page 2

## Residual Solvent Analysis

Attribute	Method	Specification	Status
Butanes	GC	<500 ppm	Pass
Ethanol	GC	<500 ppm	Pass
Heptanes	GC	<500 ppm	Pass
Propane	GC	<500 ppm	Pass

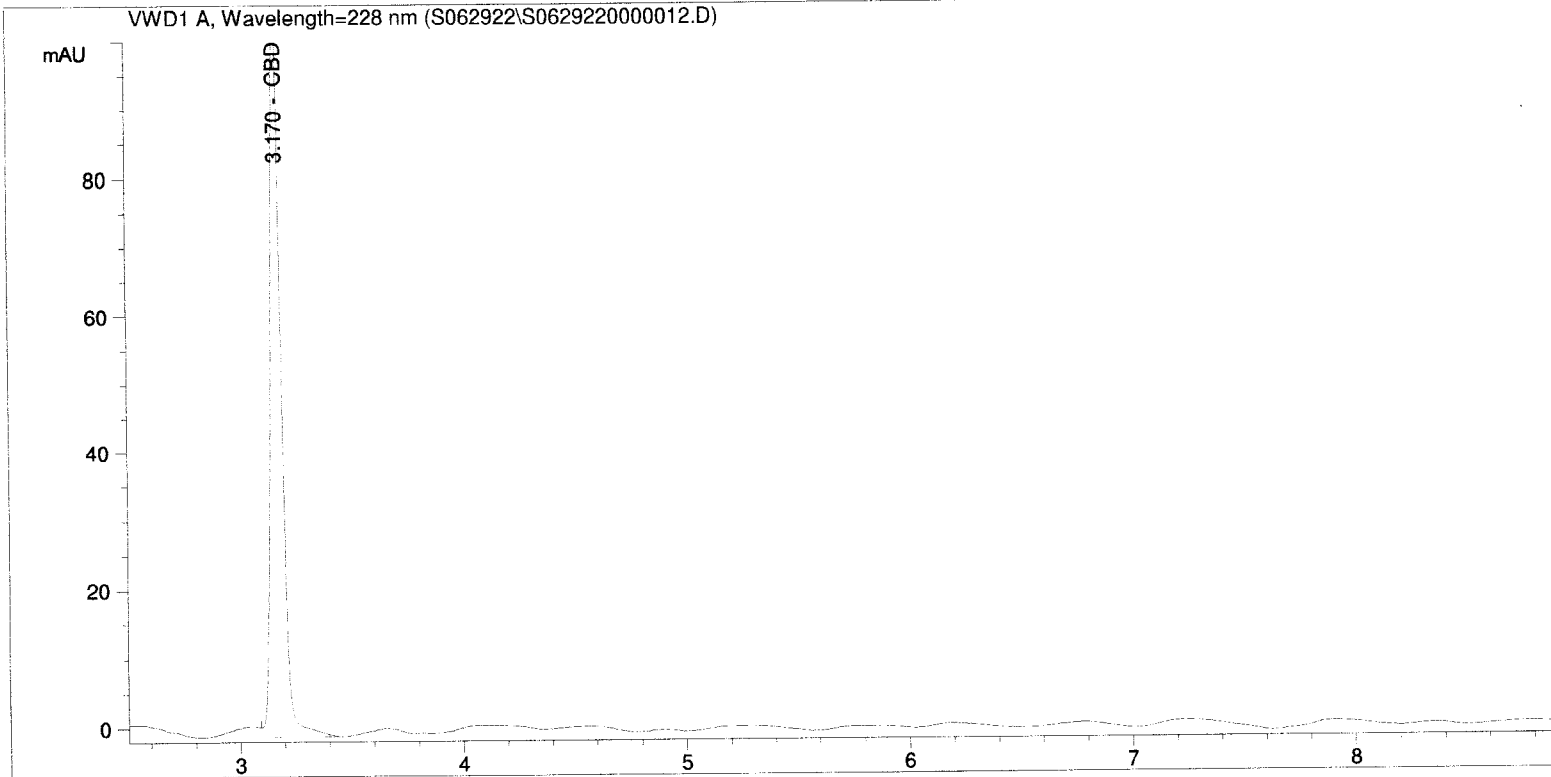
## Pesticide Analysis

Attribute	Method	Limit	Status
Abamectin	GC-FID	200	Pass
Acequinocyl	GC-FID	4000	Pass
Bifenazate	GC-FID	400	Pass
Bifrenthrin	GC-FID	100	Pass
Cyfuthrin	GC-FID	2000	Pass
Cypermethrin	GC-FID	1000	Pass
Daminozide	GC-FID	800	Pass
Dimethomorph	GC-FID	2000	Pass
Eoxazole	GC-FID	400	Pass
Fenhexamid	GC-FID	1000	Pass
Flonicamid	GC-FID	1000	Pass
Fludioconil	GC-FID	500	Pass
Imidicloprid	GC-FID	500	Pass
Myclobutanil	GC-FID	400	Pass
Paclobutrazol	GC-FID	400	Pass
Piperonyl Butoxid	GC-FID	3000	Pass
Pyrethrins	GC-FID	2000	Pass
Quintozene	GC-FID	800	Pass
Spinetoram	GC-FID	1000	Pass
Spinosad	GC-FID	1000	Pass
Spirotetramat	GC-FID	1000	Pass
Thiamethoxam	GC-FID	400	Pass
Triflozystrobin	GC-FID	1000	Pass
Plant Growth Regulators	GC-FID	50	Pass

QA Approval:		Date:	7/7/2022
--------------	---	-------	----------

```

=====
Acq. Operator   : SF                      Seq. Line : 12
Acq. Instrument : Instrument 1             Location  : Vial 11
Injection Date  : 6/29/2022 5:49:39 AM   Inj       : 1
                                           Inj Volume: 5.0 µl
Acq. Method    : C:\CHEM32\1\METHODS\ARCHIVE METHODS\POTENCY_2022.M
Last changed   : 6/29/2022 3:43:02 AM by SF
Analysis Method: C:\CHEM32\1\METHODS\POTENCY_2022.M
Last changed   : 7/4/2022 2:34:47 PM by SF
                (modified after loading)
Method Info    : Cannabinoid Potency 9 minutes
                Cal Jan 2022
=====
    
```



=====  
 ESTD Percent Report  
 =====

```

Sorted By      : Signal
Calib. Data Modified : 7/4/2022 2:13:41 PM
Multiplier:    : 1.0000
Dilution:      : 10.1000
Sample Amount: : 17.90000 [mg/ml]
Do not use Multiplier & Dilution Factor with ISTDs
    
```

Signal 1: VWD1 A, Wavelength=228 nm

RetTime [min]	Type	Area mAU	Amt/Area *s	Amount %	Grp	Name
1.627		-	-	-		Ibuprofen IS
2.983		-	-	-		CBG
3.170	VB	358.62735	1.21584e-4	2.460291		CBD
3.393		-	-	-		THCV
4.582		-	-	-		CBN
5.718		-	-	-		d9-THC

Sample Name: No 11 1000mg lav 062922 prep

RetTime [min]	Type	Area mAU *s	Amt/Area	Amount %	Grp	Name
5.893		-	-	-		d8-THC
6.761		-	-	-		CBL
7.138		-	-	-		CBC
7.664		-	-	-		THCA
12.000		-	-	-		CBT

Totals : 2.460291

1 Warnings or Errors :

Warning : Time reference compound(s) not found

=====  
\*\*\* End of Report \*\*\*

## CERTIFICATE OF ANALYSIS

**Product** : Lavender Essential Oil (France) Lot # 111858  
**Batch No** : 11078C11021  
**Best Before** : August, 2025

<u>Properties</u>	<u>Specifications</u>	<u>Results</u>
Appearance	: Clear to pale yellow clear liquid.	Complies
Odor	: Characteristic Lavender aroma.	Complies
Solubility	: Soluble in alcohols and oils. Insoluble in water.	Complies
Specific Gravity	: 0.875 to 0.890 @ 20°C	0.877
Refractive Index	: 1.457 to 1.467 @ 20°C	1.462
Optical Rotation	: -3.0° to -10.0° @ 20°C	-9.12
Linalool	: 25 - 45 % (g.c.)	35.91
Linalyl Acetate	: 20 - 40 % (g.c)	23.21
Camphor	: < 0.6 %	0.20

Mfg Date August 2021

**Storage:** Store in air tight containers; in a cool dry area; away from direct sunlight.

### Disclaimer & Caution

Please refer to all relevant technical information specific to the product, prior to use. The information contained in this document is obtained from current and reliable sources. The vendor provides the information contained herein, but makes no representation as to its comprehensiveness or accuracy. Individuals receiving this information must exercise their independent judgment in determining its appropriateness for a particular purpose. The user of the product is solely responsible for compliance with all laws and regulations applying to the use of the products, including intellectual property rights of third parties. As the ordinary or otherwise use(s) of this product is outside the control of the vendor, no representation or warranty, expressed or implied, is made as to the effect(s) of such use(s), (including damage or injury), or the results obtained. The liability of the vendor is limited to the value of the goods and does not include any consequential loss. The vendor shall not be liable for any errors or delays in the content, or for any actions taken in reliance thereon.



Brookfoot House, Low Lane, Horsforth,  
LS18 5PU LEEDS  
Tel : 01132050900  
www.StephensonPersonalCare.com

**Certificate Of Analysis**

**Product** FLI0082  
EASY LOTION 1000KG IBC

**Batch number** 163905

**Sales Order Number** 080188

**Date Of Manufacture** 17/12/2020 **Expiry:** 18/06/2022

Quality Control Test	Test Method	Test Result
NVS (Ohaus) (23%-28%)	BAM18B	23.29
pH Measurement (5-6)	BAM38	5.56
Viscosity (75000-125000)	BAM41	119200
White Viscous Lotion	BAM36	Pass

I certify that the product detailed above has been inspected and tested and conforms in all respects to the relevant specification and that the details of Quality Control testing are as above & manufactured in UK

**Certificat d'analyse / Certificate of analysis**

**Batch nr : 0000040297**

**Date : 21.12.2021**

**Reference : 160616000021**

**BEURRE DE KARITÉ 1ÈRE PRESSION RAFFINÉ  
SHEA BUTTER PRESSED AND REFINED**

**TrueShea**

Lot # 113159

Caractéristiques physico-chimiques / Analytical characteristics	METHODES	NORMES	RESULTATS
Caractères organoleptiques / Organoleptic characters	Interne / Internal	Beurre solide/Solid butter	Conforme
Point de fusion en °C / Melting point in °C	AOCS Cc3b-92	34 - 44	35
Gardner / Colour	Gardner	INTERNE/INTERNAL	1.6
Couleur Lovibond 5 1/4 jaune / Colour inch cell Lovibond 5 1/4 yellow	NEN 6308 - NEN 6310	0.0 - 20.0	7.4
Couleur Lovibond 5 1/4 rouge / Colour inch cell Lovibond 5 1/4 red	NEN 6310 - NEN 6308	0.0 - 2.0	1.4
Indice de réfraction à 40°C / Refractive index at 40°C	PE 2.2.6	1.460 - 1.475	1.463
Indice d'acide en mg KOH/g / Acid value in mg KOH/g	PE 2.5.1	0.00 - 0.50	0.20
Teneur en eau en % / Water content in %	PE 2.5.32	0.00 - 0.10	0.01
Indice d'iode / Iodine value	PE 2.5.4	52 - 68	62
Indice de peroxyde en méq O2/Kg / Peroxide value in méq O2/Kg	PE 2.5.5	0.0 - 10.0	0.0
Teneur en insaponifiable en % / Unsaponifiable matter in %	PE 2.5.7	Min 4.0	5.2

Répartition des acides gras (%) / Fatty acid composition (in %)	METHODES	NORMES	RESULTATS
Acides gras trans / Trans fatty acids	PE 2.4.22	0.0 - 2.0	0.2
C12:0 (acide laurique / lauric)		0.0 - 1.0	0.0
C14:0 (acide myristique / myristic)		0.0 - 1.0	TRACES
C16:0 (acide palmitique / palmitic)		3.0 - 8.0	3.2
C18:0 (acide stéarique / stearic)		36.0 - 50.0	42.5
C18:1 (acide oléique / oleic)		40.0 - 50.0	45.5
C18:2 (acide linoléique / linoleic)		4.0 - 8.0	6.3
C18:3 (acide linoléique / linolenic)		0.0 - 1.0	0.2
C20:0 (acide arachidique / arachidic)		0.0 - 2.0	1.5
C20:1 (acide gadoléique / eicosenoic)		0.0 - 1.0	0.4
C22:0 (Acide béhenique / behenic)		0.0 - 1.0	0.2
C22:1 (acide érucique / erucic)		0.0 - 2.0	0.0
C24:0 (acide lignocérique / lignoceric)		0.0 - 1.0	0.1

N.D. = Non déterminé / Not Determined

Date de fabrication / Date of manufacturing : 12/2021

DLUO / Best before : 12/2023

Conservation dans le récipient original bien rempli et fermé, à l'abri de la lumière et de la chaleur.

Keep in a dark cool place in the original full closed drum or container.

Document informatique validé par le service qualité / computer edited document validated by quality department

**CERTIFICATE OF ANALYSIS  
FRACTIONATED COCONUT OIL**

**Gracefruit Ltd**

Customer:	Gracefruit Limited	Order No:	-
		Batch No:	KMO7479
Date:	10.11.2016	Code No:	-

**Description:** A light coloured, low viscosity oil, containing the tri-glycerides of medium chain, saturated fatty acids mainly C-8 (Caprylic) and C-10 (Capric).

TEST	SPECIFICATION	ANALYSIS
Acid Value (mg KOH/g)	0.2 maximum	0.022
Iodine Value (g <sub>12</sub> /100g)	1.0 maximum	0.1
Hydroxyl Value (mg KOH/g)	10 maximum	1.0
Saponification Value (mg KOH/g)	310 - 360	332.11
Unaponifiable Matter (%)	0.5 maximum	< 0.5
Peroxide Value (meq O <sup>2</sup> /kg)	1.0 maximum	0.1
Specific Gravity @ 20°C	0.930 – 0.960	0.945
Refractive Index	1.440 – 1.452	1.448
Alkaline Impurities (ml 0.01m HCl)	0.15 maximum	< 0.15
Heavy Metals (ppm)	10.0 maximum	< 10
Water Content (%)	0.2 maximum	Complies
Loss on Drying (%)	0.5 maximum	< 0.5
Sulphated Ash	0.1 maximum	< 0.1

FATTY ACID COMPOSITION (%)		
C6:0 Caproic Acid	2.0 maximum	<2.0
C8:0 Caprylic Acid	50 - 80	59.4
C10:0 Capric Acid	20 - 50	40.4
C12:0 Lauric Acid	3.0 maximum	<3.0
C14:0 Myristic Acid	1.0 maximum	<1.0

**Date of Manufacture: March 2016**

**Date of Expiry: March 2018**

This COA is produced electronically therefore no signature is required.



## Certificate of Analysis

Product: MCT Coconut Based USP/NF  
Package Size: 418.874 # DRUM

Certification Date: January 12, 2022  
Manufacture Date: September 6, 2021  
Recertification Date: September 5, 2023

Lot # 113364

KCC Number: 306162

Batch Number: BTA2109118

THE FOLLOWING VALUES HAVE BEEN PROVIDED BY THE MANUFACTURER OF THIS PRODUCT.

Characteristic	Specification	Result
Appearance	Clear, light-yellow liquid	Clear, light-yellow liquid
Taste	Characteristic	Characteristic
Color APHA	50 max	28
Acid value, mg KOH/g	0.1 max	0.04
Moisture %	0.1 max	0.01
Peroxide Value, mEq/kg	1 max	0.00
Saponification Value, mg KOH/g	300 – 350	335.42
Iodine Value, g I <sub>2</sub> /100g	To report	0.02
Density @ 25°C	0.89 – 0.94	0.94
<b>Fatty Acid Composition, %</b>		
C6	2 max	0.57
C8	55 – 70	64.23
C10	29 – 45	33.00
C12	3 max	2.21
<b>Microbiological, CFU/gram</b>		
Aerobic Plate Count	100 Max	< 10
E.coli / Coliform Count	10 Max	< 10 / <10
Yeast and Mold Count	10 Max	< 10
Salmonella	Negative	Negative
Staphylococcus Aureus Count	Negative	Negative

Quality Approved  
January 12, 2022

**Important:** The information presented herein, while not guaranteed, was prepared by technical personnel and is true and accurate to the best of our knowledge. NO WARRANTY OF MERCHANTABILITY OR OF FITNESS FOR A PARTICULAR PURPOSE, OR WARRANTY OR GUARANTY OF ANY OTHER KIND, EXPRESS OR IMPLIED, IS MADE REGARDING PERFORMANCE, SAFETY, SUITABILITY, STABILITY OR OTHERWISE. This information is not intended to be all-inclusive as to the manner and conditions of use, handling, storage, disposal, and other factors that may involve other or additional legal, environmental, safety or performance considerations, and the vendor assumes no liability whatsoever for the use of or reliance upon this information. While our technical personnel will be happy to respond to questions, safe handling and use of the product remains the responsibility of the customer. No suggestions for use are intended as, and nothing herein shall be construed as, a recommendation to infringe any existing patents or to violate any Federal, State, local or foreign laws.



# Report: COA Evaluation Summary

OLCC License No: C1870502BDA / ORCLAP ID: 4147

629 SW 10th Street, Corvallis OR 97331 | 541-457-5012 | services@prelab.com | PreLab.com

For OLCC/OHA Compliance Purposes.

## Product Description

Client: Precision Plant Molecules

Product Name: CBD-21-014

Matrix: Hemp Concentrate

Metric Source ID: n/a

Metric Package ID: n/a

License Number: n/a

Date Collected: 2021-07-06

Date Received: 2021-07-06

Report Date: 2021-07-08

Report ID: A4056-02

Tests Requested: Cannabinoid Potency Analysis  
Pesticide Analysis  
Residual Solvent Analysis

## Evaluation Summary

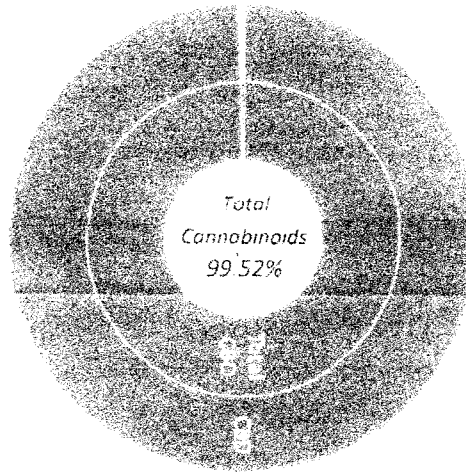
Moisture Analysis

Test Not Required

### Cannabinoid Potency Analysis

**Total THC** < LOQ  
**Total CBD** 99.15 %  
< LOQ 991.5 mg/g

Abv	Dry Wt. %	Dry Wt. mg/g
THCA	< LOQ	< LOQ
Δ-9-THC	< LOQ	< LOQ
Δ-8-THC	< LOQ	< LOQ
THCV	< LOQ	< LOQ
CBDA	< LOQ	< LOQ
CBD	99.15 %	991.5 mg/g
CBGA	< LOQ	< LOQ
CBG	< LOQ	< LOQ
CBDVA	< LOQ	< LOQ
CBDV	0.38 %	3.8 mg/g
CBN	< LOQ	< LOQ
CBL	< LOQ	< LOQ
CBC	< LOQ	< LOQ



Pesticide Analysis

Pesticide Status

Pass

No Pesticides Were Detected above Oregon's action limit as stated in OAR 333-007-0400

# Report: Evaluation Detail



OLCC License No. 10067092B0A | ORELAP ID: 4127

841 SW 10th Street, Corvallis, OR 97331 | 541.257.5912 | [services@prelab.com](mailto:services@prelab.com) | [prelab.com](http://prelab.com)

For OLCC/OHA Compliance Purposes.

## Moisture Analysis

## Evaluation Detail

Moisture Analysis

Test Not  
Requested/Required

## Cannabinoid Potency Analysis

## Evaluation Detail

Cannabinoid Potency Analysis	Compound	Abbr.	Dry Wt. (%)	Dry Wt. (mg/g)	RL (%)
<b>Total THC</b>	Tetrahydrocannabinolic acid	THCA	< LOQ	< LOQ	0.2%
LOQ	Delta9 Tetrahydro-cannabinol	Δ-9-THC	< LOQ	< LOQ	0.2%
LOQ	Delta8 Tetrahydro-cannabinol	Δ-8-THC	< LOQ	< LOQ	0.2%
	Tetrahydrocannabinol	THCV	< LOQ	< LOQ	0.2%
<b>Total CBD</b>	Cannabidiolic acid	CBDA	< LOQ	< LOQ	0.2%
99.15 %	Cannabidiol	CBD	99.15 %	991.5	0.2%
991.5 mg/g	Cannabigerolic acid	CBGA	< LOQ	< LOQ	0.2%
	Cannabigerol	CBG	< LOQ	< LOQ	0.2%
	Cannabidivarinic acid	CBDVA	< LOQ	< LOQ	0.2%
	Cannabidivarin	CBDV	0.38 %	3.8	0.2%
	Cannabinol	CBN	< LOQ	< LOQ	0.2%
	Cannabicyclol	CBL	< LOQ	< LOQ	0.2%
	Cannabichromene	CBC	< LOQ	< LOQ	0.2%

Note: Accreditation for Δ-8-THC, THCV, CBGA, CBG, CBDVA, CBDV, CBL, CBC, CBN is not offered by ORELAP and therefore are not accredited tests

# Report: Evaluation Detail



OLCC OSHA No. 1007092604 | ORBLAP ID: 4147

310 SW 12nd Street, Corvallis, OR 97331 | 541-763-8100 | [service@preelabs.com](mailto:service@preelabs.com) | [preelabs.com](http://preelabs.com)

For OLCC/OHA Compliance Purposes.

## Pesticide Analysis

## Evaluation Detail

Pesticide Name	Tested Value (ppm)	Pass Criteria (ppm)	LOQ (ppm)	Status Pass/Unsatisfactory
Melathion	< LOQ	0.20	0.04	Pass
Metalaxyl	< LOQ	0.20	0.04	Pass
Methiocarb	< LOQ	0.20	0.04	Pass
Methomyl	< LOQ	0.40	0.04	Pass
Methyl-Parathion	< LOQ	0.20	0.20	Pass
MGK-264	< LOQ	0.20	0.20	Pass
Mydebutant	< LOQ	0.20	0.20	Pass
Naled	< LOQ	0.50	0.04	Pass
Oxamyl	< LOQ	1.00	0.04	Pass
Paclitrazol	< LOQ	0.40	0.04	Pass
Permethrin	< LOQ	0.20	0.20	Pass
Phosmet	< LOQ	0.20	0.04	Pass
Piperonyl butoxide	< LOQ	0.20	0.04	Pass
Prallethrin	< LOQ	0.20	0.20	Pass
Prothioconazole	< LOQ	0.40	0.20	Pass
Propoxur	< LOQ	0.20	0.04	Pass
Pyrethrins	< LOQ	1.00	1.00	Pass
Pyridaben	< LOQ	0.20	0.04	Pass
Spinosad	< LOQ	0.20	0.20	Pass
Spinosylfen	< LOQ	0.20	0.20	Pass
Spinetoram	< LOQ	0.20	0.04	Pass
Suloxamine	< LOQ	0.40	0.04	Pass
Tebuconazole	< LOQ	0.40	0.04	Pass
Thiacloprid	< LOQ	0.20	0.04	Pass
Thiamethoxam	< LOQ	0.20	0.04	Pass
Trifloxystrobin	< LOQ	0.20	0.04	Pass

# Report: Quality Check



OLCC License No. 10370825DA | PREL-# ID: 4147  
545 SW 3rd Street, Clatskanie, OR 97331 | 503.257.6900 | [services@pree-lab.com](mailto:services@pree-lab.com) | [pree-lab.com](http://pree-lab.com)

For OLCC/OHA Compliance Purposes

## Moisture Analysis

## Quality Control Detail

Moisture Analysis

## Cannabinoid Potency Analysis

## Quality Control Detail

Cannabinoid Potency Analysis	MB	LCS	Expected Value (%)	Tested Value (%)	Pass Criteria
Tetrahydro-cannabinolic acid	0		< 0.1%	< 0.1%	0.1%
Delta8 Tetrahydro-cannabinol	0		< 0.1%	< 0.1%	< 0.1%
Cannabidiolic acid	0		< 0.1%	< 0.1%	0.1%
Cannabidiol	0		< 0.1%	< 0.1%	< 0.1%
Tetrahydro-cannabinolic acid		*	100.0%	119.8%	80-120%
Delta9 Tetrahydro-cannabinol		*	100.0%	119.4%	80-120%
Cannabidiolic acid		*	100.0%	111.6%	80-120%
Cannabidiol		*	100.0%	108.3%	80-120%

# Report: Quality Check



PREE ISO 9001:2015 Certified Laboratory

## Pesticide Analysis

## Quality Control Detail

Pesticide Name	MB	Expected Value (ppm)	Tested Value (ppm)	Pass Criteria (ppm)
Abamectin	0	< 0.1	< 0.1	< 0.1
Acetate	0	< 0.02	< 0.02	< 0.02
Acetaminophen	0	< 0.1	< 0.1	< 0.1
Acetaminophen	0	< 0.02	< 0.02	< 0.02
Aldicarb	0	< 0.02	< 0.02	< 0.02
Azoxystrobin	0	< 0.02	< 0.02	< 0.02
Bifenazate	0	< 0.02	< 0.02	< 0.02
Bifenthrin	0	< 0.1	< 0.1	< 0.1
Boscalid	0	< 0.02	< 0.02	< 0.02
Carbaryl	0	< 0.02	< 0.02	< 0.02
Carbofuran	0	< 0.02	< 0.02	< 0.02
Chlorantraniliprole	0	< 0.02	< 0.02	< 0.02
Chlorfenacyl	0	< 0.5	< 0.5	< 0.5
Chlorpyrifos	0	< 0.02	< 0.02	< 0.02
Clofentezine	0	< 0.1	< 0.1	< 0.1
Cyfluthrin	0	< 0.5	< 0.5	< 0.5
Cypermethrin	0	< 0.5	< 0.5	< 0.5
Daminozide	0	< 0.1	< 0.1	< 0.1
Diapron	0	< 0.02	< 0.02	< 0.02
Deltamethrin	0	< 0.1	< 0.1	< 0.1
Dimethoate	0	< 0.02	< 0.02	< 0.02
Dimrothos	0	< 0.02	< 0.02	< 0.02
Etofenprox	0	< 0.1	< 0.1	< 0.1
Etozazole	0	< 0.02	< 0.02	< 0.02
Fenoxycarb	0	< 0.02	< 0.02	< 0.02
Fenpyroximate	0	< 0.1	< 0.1	< 0.1
Fipronil	0	< 0.02	< 0.02	< 0.02
Flonicamid	0	< 0.02	< 0.02	< 0.02
Fludoxonil	0	< 0.1	< 0.1	< 0.1
Hexythiazox	0	< 0.02	< 0.02	< 0.02
Imazalil	0	< 0.02	< 0.02	< 0.02
Indafluprod	0	< 0.02	< 0.02	< 0.02
Kresoxim-methyl	0	< 0.1	< 0.1	< 0.1

# Report: Quality Check



OLCC License No. 100142874 | PRELAP ID: 4147

San Joaquin District Office | 2801 N. 9th St. | Fresno, CA 93703 | (559) 439-5100 | [www.cdpr.ca.gov](http://www.cdpr.ca.gov)

For OLCC/OHA Compliance Purposes.

## Pesticide Analysis

## Quality Control Detail

Pesticide Name	LCS	Expected Recovery (%)	Actual Recovery (%)	Pass Criteria (%)
Abamectin	•	100.00	108.69	60 - 140
Acephate	•	100.00	100.13	60 - 140
Acequinocyl	•	100.00	101.78	60 - 140
Acetamiprid	•	100.00	99.03	60 - 140
Aldicarb	•	100.00	96.16	60 - 140
Azoxystrobin	•	100.00	95.72	60 - 140
Bifenazate	•	100.00	98.52	60 - 140
Bifenthrin	•	100.00	102.68	60 - 140
Boscalid	•	100.00	102.02	60 - 140
Carbaryl	•	100.00	107.59	60 - 140
Carbofuran	•	100.00	103.37	60 - 140
Chlorantraniliprole	•	100.00	103.94	60 - 140
Chlorfenapyr	•	100.00	97.78	60 - 140
Chlorpyrifos	•	100.00	90.79	60 - 140
Clofentezine	•	100.00	95.21	60 - 140
Cyfluthrin	•	100.00	94.74	60 - 140
Cypermethrin	•	100.00	94.06	60 - 140
Daminozide	•	100.00	103.54	60 - 140
Diazinon	•	100.00	100.05	60 - 140
Dichlorvos	•	100.00	98.00	60 - 140
Dimethoate	•	100.00	102.84	60 - 140
Ethoprophos	•	100.00	101.54	60 - 140
Etofenprox	•	100.00	101.74	60 - 140
Etoxazole	•	100.00	104.74	60 - 140
Fenoxycarb	•	100.00	98.65	60 - 140
Fenpyroximate	•	100.00	102.55	60 - 140
Fipronil	•	100.00	95.25	60 - 140
Fonicamid	•	100.00	96.80	60 - 140
Fludioxonil	•	100.00	104.34	60 - 140
Hexythiazox	•	100.00	103.21	60 - 140
Imazalil	•	100.00	96.57	60 - 140
Imidacloprid	•	100.00	99.01	60 - 140
Kresoxim-methyl	•	100.00	102.44	60 - 140

# Report: Definition



OLCC License No. 160870928CA | ORELAP ID: 4147

641 S.W. 2nd Street, Corvallis, OR 97331 | 541.267.5002 | [www.pree.com](http://www.pree.com) | [info@pree.com](mailto:info@pree.com)

For OLCC/OHA Compliance Purposes.

## Definitions

- Limit of Quantitation (LOQ) - The minimum level, concentration, or quantity of a target analyte that can be reported with a specific degree of confidence
- Method Blank (MB) - A quality control sample that is free of the analyte being measured.
- Laboratory Control Sample (LCS) - A quality control sample with a known amount of the analyte used to demonstrate accuracy
- Field Duplicate - A second sample collected in the field using the same sampling method as the primary sample.
- Action Limit - Analyte levels set by the state of Oregon (OAR 333-007) indicating that follow-up action is necessary.
- ppm - parts per million, equivalent to 1 µg/g and 1 µg/L or 0.001 mg/g and 0.001 mg/L
- COA - Certificate of Analysis.
- Report Flag (B) - Blank contamination - The analyte was detected above one-half the reporting limit in an associated blank
- Report Flag (E) - Compound tested above the upper limit of quantitation
- Report Flag (Q) - One or more quality control criteria (for example, LCS recovery, surrogate spike recovery) failed

## Calculations

- Cannabinoid Potency
  - Wet WT% = (Exported concentration ppm) x (Dilution) x (Extraction Vol./Wet wt mg) x 100
  - Total THC% = (%THCA) x 0.877 + (%THC)
  - Total CBD% = (%CBDA) x 0.877 + (%CBD)
  - Total THC (Dry WT)% = % total THC(wet) / [1-(% moisture/100)]
  - Total CBD (Dry WT)% = % total CBD(wet) / [1-(% moisture/100)]
- Percentage Recovery
  - % Rec. = [(Amount measured) / (Known amount)] \* 100

## Disclaimers

- Disposal - All marijuana and hemp products received by PREE will be disposed of following the OLCC's rules for Marijuana Waste Management, regardless of product type, unless PREE is given specific disposal instructions for a product based on test results from state regulatory agencies