

Certificate of Analysis

Document No: F 14.008

CBGenius, Ltd

Revision: 001

Product Description

Product	100 mg lavender Bath Bomb
SKU	C200BL
Product Form	3 cm ball
Packaging, Closure	cellophane
Storage Condition	RT
Lot #	Bomb-220314

Physical

Attribute	Method/SOP	Specification	Test Result
Product Color	Organoleptic	purple	Pass
Product Odor	Organoleptic	lavender	Pass
Product Weight Variation	Sample	NA	NA

Based on RM Analysis - attached

Purity/Strength

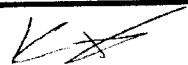
Ingredients	Label Claim	Specification	Test Result
CBD	100 mg/bomb	NA	NT
THC	< 0.3%	< 0.3%	< 0.01
Other ingredients	Corn starch, sodium bicarbonate, epsom salt, fragrance		

Identification/Chemical/Heavy Metals

Attribute	Method	Specification	Test Result
Identity	HPLC	Matches reference std	Matches reference
Other			
Arsenic	ICPMS per USP 2232	<2000 PPB	<42 PPB
Cadmium	ICPMS per USP 2232	<820 PPB	<42 PPB
Mercury	ICPMS per USP 2232	<400 PPB	<42 PPB
Lead	ICPMS per USP 2232	<1200 PPB	<42 PPB

Microbiology

Attribute	Method	Specification	Test Result
Total Aerobic	USP/AOAC/FDA BAM	< 1x 10 ³ CFU/g	None Detected
Total Yeast & Mold	USP/AOAC/FDA BAM	< 1x 10 ² CFU/g	None Detected
Bile Tolerant gram neg.	USP/AOAC/FDA BAM	< 1x 10 ² CFU/g	None Detected
E. coli	USP/AOAC/FDA BAM	None Detected	None Detected

QA Approval:		Date:	7/6/2022
--------------	---	-------	----------

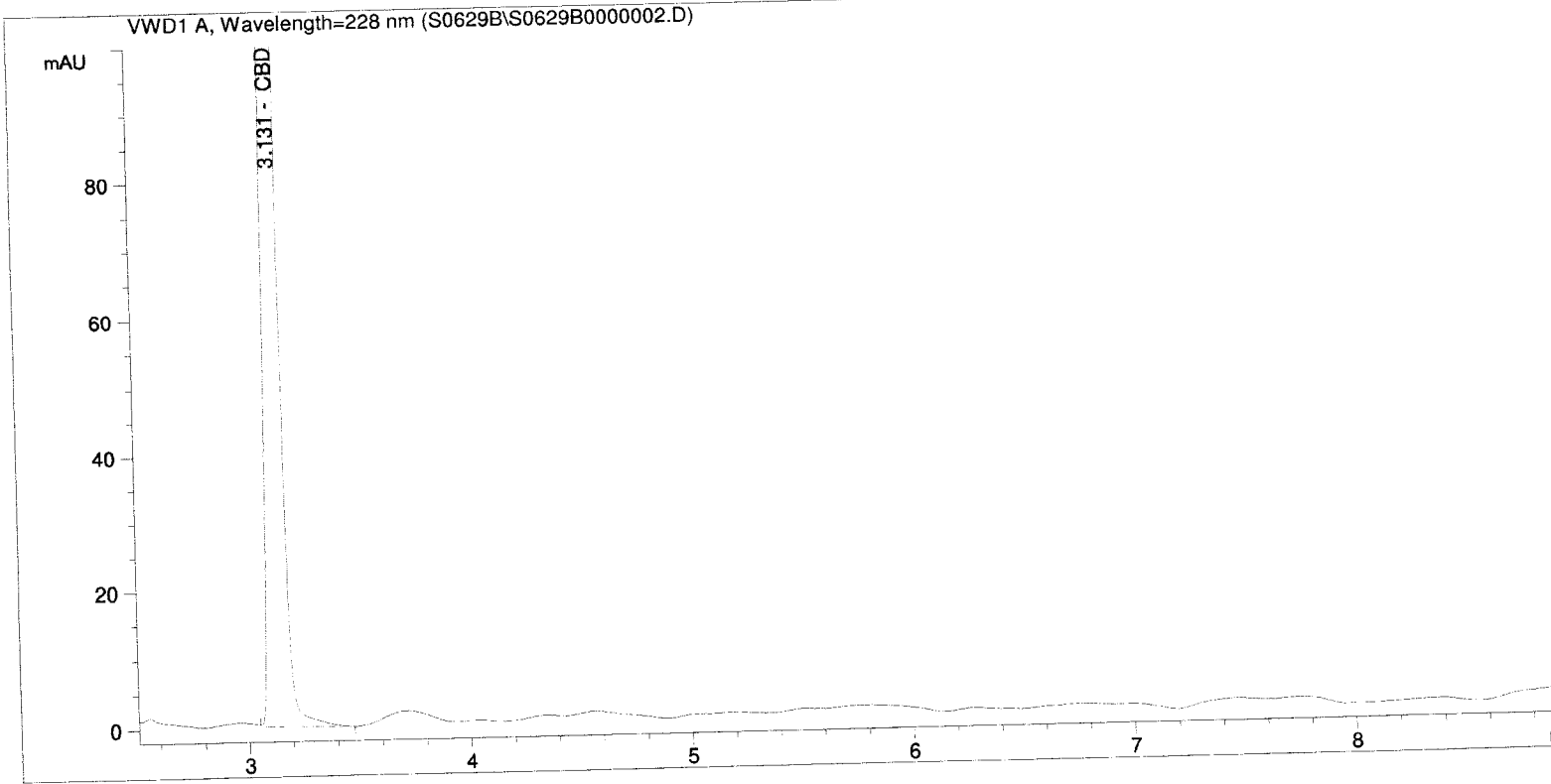
```

=====
Acq. Operator   : SF                               Seq. Line :    2
Acq. Instrument : Instrument 1                     Location  : Vial 1
Injection Date  : 6/29/2022 1:49:41 PM           Inj       :    1
                                                    Inj Volume: 5.0 µl

Acq. Method     : C:\CHEM32\1\METHODS\POTENCY_PERCENT.M
Last changed    : 6/29/2022 1:38:02 PM by SF
                  (modified after loading)

Analysis Method : C:\CHEM32\1\METHODS\POTENCY_2022.M
Last changed    : 7/4/2022 2:40:03 PM by SF
                  (modified after loading)

Method Info     : Cannabinoid Potency 9 minutes
                  Cal Jan 2022
=====
    
```



=====
 ESTD Percent Report
 =====

```

Sorted By      : Signal
Calib. Data Modified : 7/4/2022 2:13:41 PM
Multiplier:    : 1.0000
Dilution:      : 55.6000
Sample Amount: : 6.68000 [mg/ml]
Do not use Multiplier & Dilution Factor with ISTDs
    
```

Signal 1: VWD1 A, Wavelength=228 nm

RetTime [min]	Type	Area mAU *s	Amt/Area	Amount %	Grp	Name
1.627		-	-	-		Ibuprofen IS
2.983		-	-	-		CBG
3.131	VB	985.00153	1.22978e-4	100.823322		CBD
3.393		-	-	-		THCV
4.582		-	-	-		CBN

Sample Name: CBD isolate KMs from PPM

RetTime [min]	Type	Area mAU *s	Amt/Area	Amount %	Grp	Name
5.718		-	-	-		d9-THC
5.893		-	-	-		d8-THC
6.761		-	-	-		CBL
7.138		-	-	-		CBC
7.664		-	-	-		THCA
12.000		-	-	-		CBT

Totals : 100.823322

1 Warnings or Errors :

Warning : Time reference compound(s) not found

=====
*** End of Report ***