

Product Description

Product	HO 1000
SKU	C1000HO
Product Form	55 ml bottle
Packaging, Closure	Dropper, child proof
Storage Condition	RT
Lot #	HO1000-210815*

Physical

Attribute	Method/SOP	Specification	Test Result
Product Color	Organoleptic	yellow	Pass
Product Odor	Organoleptic	lemon-lime-mint, hemp	Pass
Product Weight Variation	Sample	53-55 ml	Pass

Purity/Strength

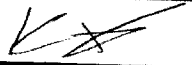
Ingredients	Label Claim	Specification	Test Result
CBD	NA	NA	1.40%
THC	< 0.3%	< 0.3%	< 0.01
Other ingredients	MCT Oil, Hempseed Oil, Lemon oil flavoring, Lime Oil Flavoring, Mint oil flavoring		

Microbiology

Attribute	Method	Specification	Test Result
Total Aerobic	USP/AOAC/FDA BAM	< 1x 10 ³ CFU/g	None Detected
Total Yeast & Mold	USP/AOAC/FDA BAM	< 1x 10 ² CFU/g	None Detected
Bile Tolerant gram neg.	USP/AOAC/FDA BAM	< 1x 10 ² CFU/g	None Detected
E. coli	USP/AOAC/FDA BAM	None Detected	None Detected

Residual Solvent Analysis

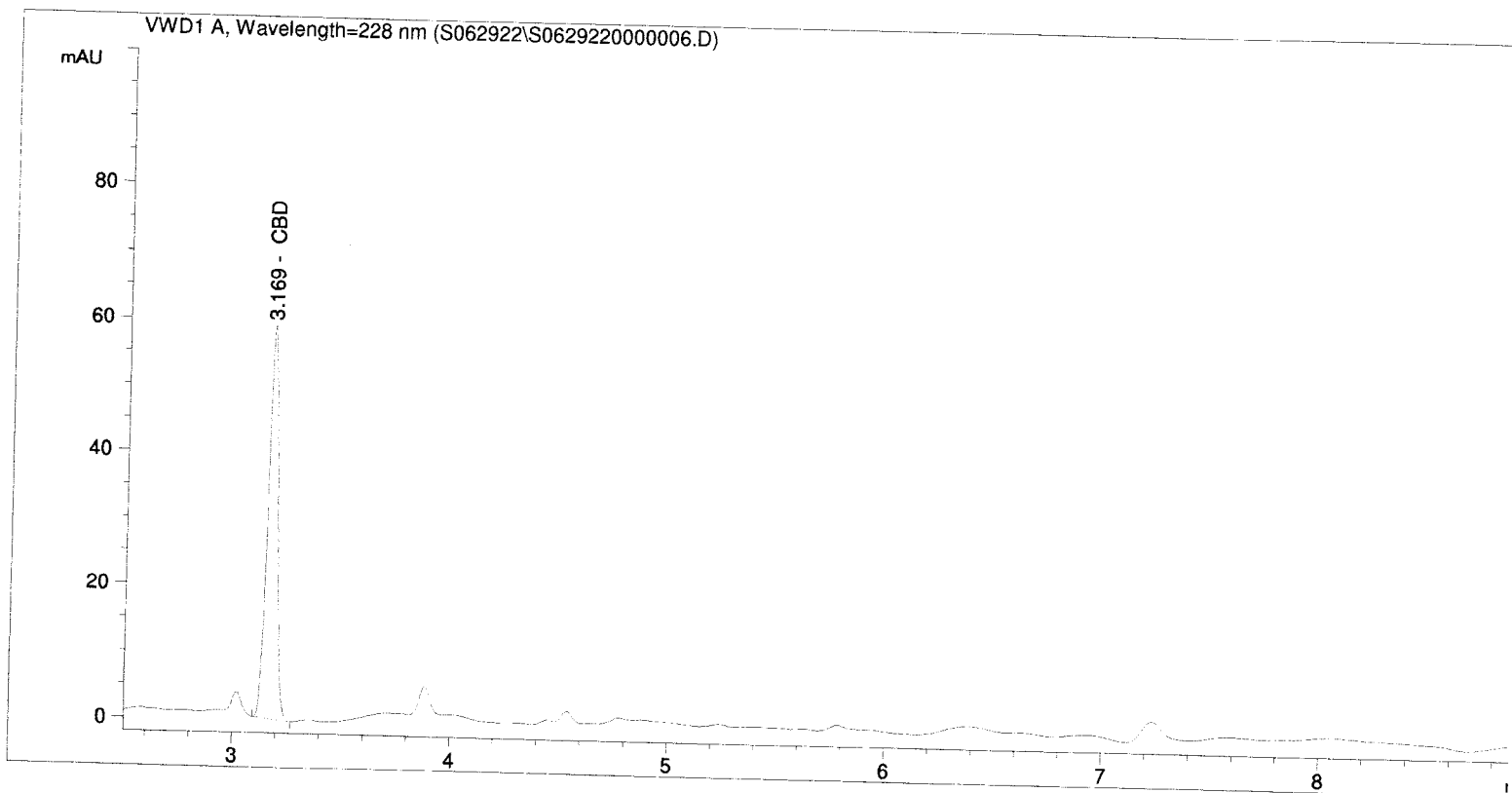
Attribute	Method	Specification	Status
Butanes	GC	<500 ppm	Pass
Ethanol	GC	<500 ppm	Pass
Heptanes	GC	<500 ppm	Pass
Propane	GC	<500 ppm	Pass

QA Approval:		Date:	7/7/2022
--------------	---	-------	----------

* Prepared by dilution of HO1500-210815

```

=====
Acq. Operator   : SF                               Seq. Line :    6
Acq. Instrument : Instrument 1                     Location  : Vial 5
Injection Date  : 6/29/2022 4:46:01 AM           Inj       :    1
                                                    Inj Volume: 5.0 µl
Acq. Method     : C:\CHEM32\1\METHODS\ARCHIVE METHODS\POTENCY_2022.M
Last changed    : 6/29/2022 3:43:02 AM by SF
Analysis Method : C:\CHEM32\1\METHODS\POTENCY_2022.M
Last changed    : 7/4/2022 12:46:21 PM by SF
                  (modified after loading)
Method Info     : Cannabinoid Potency 9 minutes
                  Cal Jan 2022
=====
    
```



ESTD Percent Report

```

=====
Sorted By      : Signal
Calib. Data Modified : Monday, July 04, 2022 12:39:28 PM
Multiplier:    : 1.0000
Dilution:     : 10.8000
Sample Amount: : 11.50000 [mg/ml]
Do not use Multiplier & Dilution Factor with ISTDs
    
```

Signal 1: VWD1 A, Wavelength=228 nm

RetTime [min]	Type	Area mAU *s	Amt/Area	Amount %	Grp	Name
1.627		-	-	-		Ibuprofen IS
2.983		-	-	-		CBG
3.169	BB	188.46983	1.19604e-4	2.116971		CBD
3.393		-	-	-		THCV
4.582		-	-	-		CBN
5.718		-	-	-		d9-THC

RetTime [min]	Type	Area mAU	*s	Amt/Area	Amount %	Grp	Name
5.893		-		-	-		d8-THC
6.761		-		-	-		CBL
7.138		-		-	-		CBC
7.664		-		-	-		THCA
12.000		-		-	-		CBT

Totals : 2.116971

1 Warnings or Errors :

Warning : Time reference compound(s) not found

=====
*** End of Report ***