

Product Description

Product	CBDFS 1500
SKU	C1500FSC
Product Form	55 ml bottle
Packaging, Closure	Dropper, child proof
Storage Condition	RT
Lot #	CBDFS1500-220115

Physical

Attribute	Method/SOP	Specification	Test Result
Product Color	Organoleptic	yellow	Pass
Product Odor	Organoleptic	lemon-lime-mint	Pass
Product Weight Variation	Sample	53-55 ml	Pass

Purity/Strength

Ingredients	Label Claim	Specification	Test Result
CBD	1500 mg/55 ml	2.9 to 3.5%	3.19%
THC	< 0.3%	< 0.3%	<0.01%
Other ingredients	MCT Oil, Hempseed oil, Lemon oil flavoring, Lime Oil Flavoring, Mint oil flavoring		

Identification/Chemical/Heavy Metals

Attribute	Method	Specification	Test Result
Identity	HPLC	Matches reference std	Matches reference
CBD	HPLC	>2.9%	3.19%
Other			

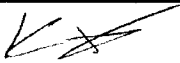
Microbiology

Attribute	Method	Specification	Test Result
Total Aerobic	USP/AOAC/FDA BAM	< 1x 10 ³ CFU/g	None Detected
Total Yeast & Mold	USP/AOAC/FDA BAM	< 1x 10 ² CFU/g	None Detected
Bile Tolerant gram neg.	USP/AOAC/FDA BAM	< 1x 10 ² CFU/g	None Detected
E. coli	USP/AOAC/FDA BAM	None Detected	None Detected

Residual Solvent Analysis

Attribute	Method	Specification	Status
Butanes	GC	<500 ppm	Pass
Ethanol	GC	<500 ppm	Pass
Heptanes	GC	<500 ppm	Pass
Propane	GC	<500 ppm	Pass

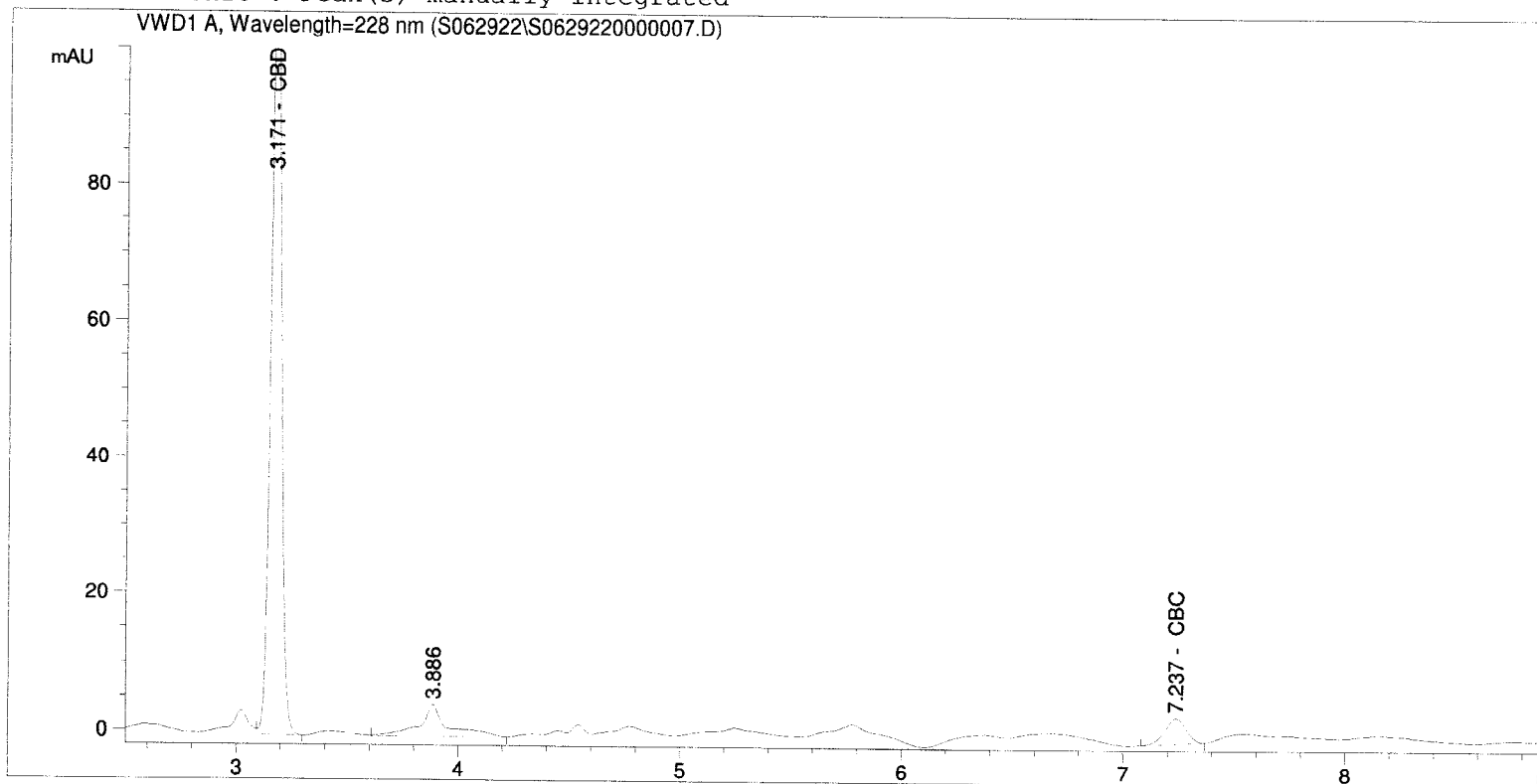
* prepared by dilution of CBDFS1500-220115

QA Approval:		Date:	7/7/2022
--------------	---	-------	----------

```

=====
Acq. Operator   : SF                               Seq. Line :    7
Acq. Instrument : Instrument 1                     Location  : Vial 6
Injection Date  : 6/29/2022 4:56:35 AM           Inj       :    1
                                                    Inj Volume: 5.0 µl
Acq. Method     : C:\CHEM32\1\METHODS\ARCHIVE METHODS\POTENCY_2022.M
Last changed    : 6/29/2022 3:43:02 AM by SF
Analysis Method : C:\CHEM32\1\METHODS\POTENCY_2022.M
Last changed    : 7/4/2022 2:22:44 PM by SF
Method Info     : Cannabinoid Potency 9 minutes
                  Cal Jan 2022
    
```

Additional Info : Peak(s) manually integrated



=====
 ESTD Percent Report
 =====

```

Sorted By           :      Signal
Calib. Data Modified :      7/4/2022 2:13:41 PM
Multiplier          :           1.0000
Dilution            :           8.2000
Sample Amount       :           11.70000 [mg/ml]
Do not use Multiplier & Dilution Factor with ISTDs
    
```

Signal 1: VWD1 A, Wavelength=228 nm

RetTime [min]	Type	Area mAU	Amt/Area *s	Amount %	Grp	Name
1.627		-	-	-		Ibuprofen IS
2.983		-	-	-		CBG
3.171	VB	374.32156	1.21675e-4	3.192095		CBD
3.393		-	-	-		THCV
4.582		-	-	-		CBN
5.718		-	-	-		d9-THC

RetTime [min]	Type	Area mAU	Amt/Area *s	Amount %	Grp	Name
5.893		-	-	-		d8-THC
6.761		-	-	-		CBL
7.237	BB	24.53390	1.09315e-4	0.187965		CBC
7.664		-	-	-		THCA
12.000		-	-	-		CBT

Totals : 3.380059

1 Warnings or Errors :

Warning : Time reference compound(s) not found

=====
*** End of Report ***