

# Certificate of Analysis

Document No: F 14.008

CBGenius, Ltd

Revision: 001

## Product Description

Product	CBG 2000
SKU	C2000RI
Product Form	55 ml bottle
Packaging, Closure	Dropper, child proof
Storage Condition	RT
Lot #	CBGO-220422

## Physical

Attribute	Method/SOP	Specification	Test Result
Product Color	Organoleptic	yellow	Pass
Product Odor	Organoleptic	lemon-mint	Pass
Product Weight Variation	Sample	53-55 ml	Pass

## Purity/Strength

Ingredients	Label Claim	Specification	Test Result
CBD	2000 mg/55 ml	3.85% to 4.5%	3.95%
THC	< 0.3%	< 0.3%	< 0.01
Other ingredients	MCT Oil, Lemon oil flavoring, Mint oil flavoring		

## Identification/Chemical/Heavy Metals

Attribute	Method	Specification	Test Result
Identity	HPLC	Matches reference std	Matches reference
CBD	HPLC	>3.8%	3.95%
Other			
Arsenic	ICPMS per USP 2232	<2000 PPB	<42 PPB
Cadmium	ICPMS per USP 2232	<820 PPB	<42 PPB
Mercury	ICPMS per USP 2232	<400 PPB	<42 PPB
Lead	ICPMS per USP 2232	<1200 PPB	<42 PPB

## Microbiology

Attribute	Method	Specification	Test Result
Total Aerobic	USP/AOAC/FDA BAM	< 1x 10 <sup>3</sup> CFU/g	None Detected
Total Yeast & Mold	USP/AOAC/FDA BAM	< 1x 10 <sup>2</sup> CFU/g	None Detected
Bile Tolerant gram neg.	USP/AOAC/FDA BAM	< 1x 10 <sup>2</sup> CFU/g	None Detected
E. coli	USP/AOAC/FDA BAM	None Detected	None Detected

QA Approval:		Date:	7/6/2022
--------------	---	-------	----------

## COA Page 2

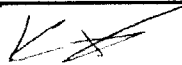
## Residual Solvent Analysis

Attribute	Method	Specification	Status
Butanes	GC	<500 ppm	Pass
Ethanol	GC	<500 ppm	Pass
Heptanes	GC	<500 ppm	Pass
Propane	GC	<500 ppm	Pass

## Pesticide Analysis

Attribute	Method	Limit	Status
Abamectin	GC-FID	200	Pass
Acequinocyl	GC-FID	4000	Pass
Bifenazate	GC-FID	400	Pass
Bifenthrin	GC-FID	100	Pass
Cyfluthrin	GC-FID	2000	Pass
Cypermethrin	GC-FID	1000	Pass
Daminozide	GC-FID	800	Pass
Dimethomorph	GC-FID	2000	Pass
Eoxazole	GC-FID	400	Pass
Fenhexamid	GC-FID	1000	Pass
Flonicamid	GC-FID	1000	Pass
Fludioconil	GC-FID	500	Pass
Imidicloprid	GC-FID	500	Pass
Myclobutanil	GC-FID	400	Pass
Pacllobutrazol	GC-FID	400	Pass
Piperonyl Butoxid	GC-FID	3000	Pass
Pyrethrins	GC-FID	2000	Pass
Quintozene	GC-FID	800	Pass
Spinetoram	GC-FID	1000	Pass
Spinosad	GC-FID	1000	Pass
Spirotetramat	GC-FID	1000	Pass
Thiamethoxam	GC-FID	400	Pass
Triflozystrobin	GC-FID	1000	Pass
Plant Growth Regulators	GC-FID	50	Pass

QA Approval:



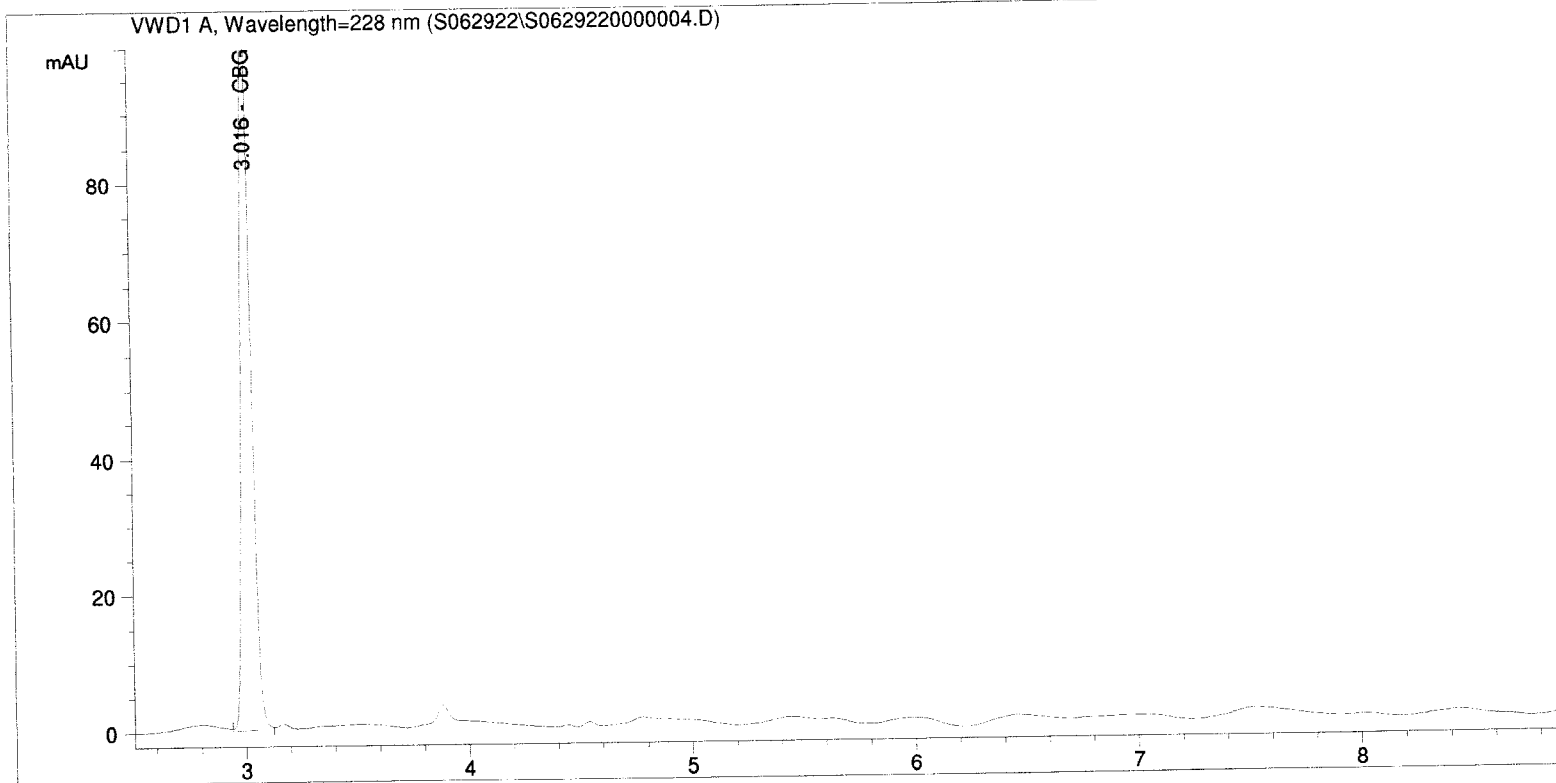
Date:

7/6/2022

```

=====
Acq. Operator   : SF                               Seq. Line :    4
Acq. Instrument : Instrument 1                       Location  : Vial 3
Injection Date  : 6/29/2022 4:24:53 AM             Inj       :    1
                                                    Inj Volume: 5.0 µl

Acq. Method     : C:\CHEM32\1\METHODS\ARCHIVE METHODS\POTENCY_2022.M
Last changed    : 6/29/2022 3:43:02 AM by SF
Analysis Method : C:\CHEM32\1\METHODS\POTENCY_2022.M
Last changed    : 7/4/2022 12:39:56 PM by SF
Method Info     : Cannabinoid Potency 9 minutes
                  Cal Jan 2022
=====
    
```



ESTD Percent Report

```

=====
Sorted By      : Signal
Calib. Data Modified : Monday, July 04, 2022 12:39:28 PM
Multiplier:    : 1.0000
Dilution:      : 10.7000
Sample Amount: : 11.00000 [mg/ml]
Do not use Multiplier & Dilution Factor with ISTDs
    
```

Signal 1: VWD1 A, Wavelength=228 nm

RetTime [min]	Type	Area mAU *s	Amt/Area	Amount %	Grp	Name
1.645		-	-	-		Ibuprofen IS
3.016	VV +	337.77194	1.20143e-4	3.947417		CBG
3.166		-	-	-		CBD
3.431		-	-	-		THCV
4.633		-	-	-		CBN
5.782		-	-	-		d9-THC
5.959		-	-	-		d8-THC

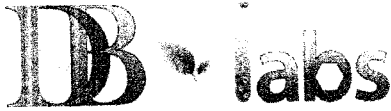
RetTime [min]	Type	Area mAU	Amt/Area *s	Amount %	Grp	Name
6.837		-	-	-		CBL
7.218		-	-	-		CBC
7.750		-	-	-		THCA
12.134		-	-	-		CBT

Totals : 3.947417

1 Warnings or Errors :

Warning : Calibrated compound(s) not found

=====  
\*\*\* End of Report \*\*\*



# Certificate of Analysis

Powered by Confident Cannabis

Sample: 2108DBL0229.8542  
METRC Sample:

PPM

Welby, CO 80229  
info@precisionplantmolecules.com

Lic. #

Strain: CBG  
Ordered: 08/18/2021; Sampled: 08/19/2021; Completed: 08/26/2021

## CBG-21-005

Concentrates & Extracts, Cannabinoid Isolate, Other



Pesticides



Microbials



Mycotoxins



Heavy Metals



Foreign Matter



Solvents

### Terpenes

Analyzed by 300.13 GC/FID and GC/MS

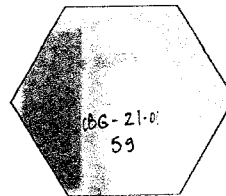
Compound	LOQ	Mass %	Mass mg/g
Total Terpenes	<LOQ		
$\alpha$ -Bisabolol	<LOQ	<LOQ	<LOQ
$\alpha$ -Humulene	<LOQ	<LOQ	<LOQ
$\alpha$ -Pinene	<LOQ	<LOQ	<LOQ
$\alpha$ -Terpinene	<LOQ	<LOQ	<LOQ
$\beta$ -Caryophyllene	<LOQ	<LOQ	<LOQ
$\beta$ -Myrcene	<LOQ	<LOQ	<LOQ
$\beta$ -Pinene	<LOQ	<LOQ	<LOQ
Camphene	<LOQ	<LOQ	<LOQ
Caryophyllene Oxide	<LOQ	<LOQ	<LOQ
cis-Nerolidol	<LOQ	<LOQ	<LOQ
cis-Ocimene	<LOQ	<LOQ	<LOQ
$\delta$ -3-Carene	<LOQ	<LOQ	<LOQ
$\delta$ -Limonene	<LOQ	<LOQ	<LOQ
Eucalyptol	<LOQ	<LOQ	<LOQ
$\gamma$ -Terpinene	<LOQ	<LOQ	<LOQ
Geraniol	<LOQ	<LOQ	<LOQ
Guaiol	<LOQ	<LOQ	<LOQ
Isopulegol	<LOQ	<LOQ	<LOQ
Linalool	<LOQ	<LOQ	<LOQ
p-Cymene	<LOQ	<LOQ	<LOQ
Terpinolene	<LOQ	<LOQ	<LOQ
trans-Nerolidol	<LOQ	<LOQ	<LOQ
trans-Ocimene	<LOQ	<LOQ	<LOQ

### Cannabinoid Relative Concentration

Analyzed by 300.18 UHPLC/PDA

Compound	Mass %	Mass mg/g	Relative Concentration
Total THC	<LOQ		
Total CBD	<LOQ		
99.900% Total Cannabinoids			
CBC	<LOQ	<LOQ	
CBCa	<LOQ	<LOQ	
CBD	<LOQ	<LOQ	
CBDa	<LOQ	<LOQ	
CBDV	<LOQ	<LOQ	
CBDVa	<LOQ	<LOQ	
CBG	99.900	999.00	
CBGa	<LOQ	<LOQ	
CBL	<LOQ	<LOQ	
CBN	<LOQ	<LOQ	
$\Delta$ 8-THC	<LOQ	<LOQ	
$\Delta$ 9-THC	<LOQ	<LOQ	
THCa	<LOQ	<LOQ	
THCV	<LOQ	<LOQ	
THCVa	<LOQ	<LOQ	

Total THC = 0.877 x THC-A +  $\Delta$ 9-THC +  $\Delta$ 8-THC; Total CBD = CBDa \* 0.877 + CBD



*Benjamin G.M. Chew*

Benjamin G.M. Chew, Ph.D.  
Laboratory Director

Glen Marquez  
Quality Control

This report is considered highly confidential and the sole property of the customer. DB Labs will not discuss any part of this study with personnel other than those authorized by the client. The results described in this report only apply to the samples analyzed. The reported result is based on a sample weight with the applicable moisture content for that sample. LOQ = Limit of Quantitation, Pesticide LOQ = Instrument Limit of Quantitation, NA = Not Analyzed, ND = Not Detected, NR = Not Reported, NT = Not Tested. PGR = Plant Growth Regulator. Unless otherwise stated all quality control samples performed within specifications established by the Laboratory. This product has been tested by DB Labs, LLC (MME# 61887736101164525768) using valid testing methodologies and a quality system as required by Nevada state law. Edibles are picked up prior to final packaging unless otherwise stated. Values reported relate only to the product tested. The uncertainty of measurement associated with the measurement result reported in this certificate is available from the organization upon request. DB Labs makes no claims as to the efficacy, safety or other risks associated with any detected or non-detected levels of any compounds reported herein. This Certificate shall not be reproduced except in full, without the written approval of DB Labs.



4439 Polaris Ave  
Las Vegas, NV  
(702) 728-5180  
www.dblabslv.com



# Certificate of Analysis

Powered by Confident Cannabis

PPM

Welby, CO 80229  
info@precisionplantmolecules.com

Sample: 2108DBL0229.8542  
METRC Sample:

Lic. #

Strain: CBG  
Ordered: 08/18/2021; Sampled: 08/19/2021; Completed: 08/26/2021

## CBG-21-005

Concentrates & Extracts, Cannabinoid Isolate, Other



Pesticides		Pass	
Analyzed by 300.9 LC/MS/MS and GC/MS/MS			
Compound	Mass	Status	
	PPB		
Abamectin	<LOQ	Pass	
Acequinocyl	<LOQ	Pass	
Bifenazate	<LOQ	Pass	
Bifenthrin	<LOQ	Pass	
Cyfluthrin	<LOQ	Pass	
Cypermethrin	<LOQ	Pass	
Daminozide	<LOQ	Pass	
Dimethomorph	<LOQ	Pass	
Etoxazole	<LOQ	Pass	
Fenhexamid	<LOQ	Pass	
Flonicamid	<LOQ	Pass	
Fludioxonil	<LOQ	Pass	
Imidacloprid	<LOQ	Pass	
Myclobutanil	<LOQ	Pass	
Paclobutrazol	<LOQ	Pass	
Piperonyl Butoxide	<LOQ	Pass	
Pyrethrins	<LOQ	Pass	
Quintozene	<LOQ	Pass	
Spinetoram	<LOQ	Pass	
Spinosad	<LOQ	Pass	
Spirotetramat	<LOQ	Pass	
Thiamethoxam	<LOQ	Pass	
Trifloxystrobin	<LOQ	Pass	
Plant Growth Regulators	<LOQ	Pass	

Microbials		Pass		
Analyzed by 300.1 Plating/QPCR				
Quantitative Analysis	100	Limit	Mass	Status
Bile-Tolerant Gram-Negative Bacteria	0	CFU/g	<LOQ	Pass
Yeast & Mold	0	<LOQ	<LOQ	Pass
Qualitative Analysis	Detected or Not Detected		Status	
E. Coli	Not Detected		Pass	
Salmonella	Not Detected		Pass	

Mycotoxins		Pass	
Analyzed by 300.2 Elisa			
Mycotoxin	Mass	Status	
	PPB		
Aflatoxins	4.9	Pass	
Ochratoxin A	7.6	Pass	

Heavy Metals		Pass	
Analyzed by 300.8 ICP/MS			
Element	Mass	Status	
	PPB		
Arsenic	<LOQ	Pass	
Cadmium	<LOQ	Pass	
Lead	<LOQ	Pass	
Mercury	<LOQ	Pass	

Residual Solvents		Pass	
Analyzed by 300.13 GC/FID and GC/MS			
Compound	Mass	Status	
	PPM		
Butanes	<LOQ	Pass	
Ethanol	<LOQ	Tested	
Heptanes	<LOQ	Pass	
Propane	<LOQ	Pass	



*Benjamin G.M. Chew*  
Benjamin G.M. Chew, Ph.D.  
Laboratory Director

Glen Marquez  
Quality Control

**DB Labs**  
4439 Polaris Ave  
Las Vegas, NV  
(702) 728-5180  
www.dblabslv.com

This report is considered highly confidential and the sole property of the customer. DB Labs will not discuss any part of this study with personnel other than those authorized by the client. The results described in this report only apply to the samples analyzed. The reported result is based on a sample weight with the applicable moisture content for that sample. LOQ = Limit of Quantitation. Pesticide LOQ = Instrument Limit of Quantitation, NA = Not Analyzed, ND = Not Detected, NR = Not Reported, NT = Not Tested. PGR = Plant Growth Regulator. Unless otherwise stated all quality control samples performed within specifications established by the Laboratory. This product has been tested by DB Labs, LLC (MME# 61887736101164525768) using valid testing methodologies and a quality system as required by Nevada state law. Edibles are picked up prior to final packaging unless otherwise stated. Values reported relate only to the product tested. The uncertainty of measurement associated with the measurement result reported in this certificate is available from the organization upon request. DB Labs makes no claims as to the efficacy, safety or other risks associated with any detected or non-detected levels of any compounds reported herein. This Certificate shall not be reproduced except in full, without the written approval of DB Labs.