

Certificate of Analysis

Document No: F 14.008

Revision: 001

CBGenius, Ltd

Product Description

Product	CBC 2000
SKU	CBC2000i
Product Form	55 ml bottle
Packaging, Closure	Dropper, child proof
Storage Condition	RT
Lot #	CBCO-220422

Physical

Attribute	Method/SOP	Specification	Test Result
Product Color	Organoleptic	yellow	Pass
Product Odor	Organoleptic	lemon-mint	Pass
Product Weight Variation	Sample	53-55 ml	Pass

Purity/Strength

Ingredients	Label Claim	Specification	Test Result
CBD	2000 mg/55 ml	3.85% to 4.5%	3.92%
THC	< 0.3%	< 0.3%	< 0.01
Other ingredients	MCT Oil, Lemon oil flavoring, Mint oil flavoring		

Identification/Chemical/Heavy Metals

Attribute	Method	Specification	Test Result
Identity	HPLC	Matches reference std	Matches reference
CBD	HPLC	>3.8%	4%
Other			
Arsenic	ICPMS per USP 2232	<2000 PPB	<42 PPB
Cadmium	ICPMS per USP 2232	<820 PPB	<42 PPB
Mercury	ICPMS per USP 2232	<400 PPB	<42 PPB
Lead	ICPMS per USP 2232	<1200 PPB	<42 PPB

Microbiology

Attribute	Method	Specification	Test Result
Total Aerobic	USP/AOAC/FDA BAM	< 1x 10 ³ CFU/g	None Detected
Total Yeast & Mold	USP/AOAC/FDA BAM	< 1x 10 ² CFU/g	None Detected
Bile Tolerant gram neg.	USP/AOAC/FDA BAM	< 1x 10 ² CFU/g	None Detected
E. coli	USP/AOAC/FDA BAM	None Detected	None Detected

QA Approval:		Date:	7/6/2022
--------------	---	-------	----------

Certificate of Analysis

Document No: F 14.008

CBGenius, Ltd

Revision: 001

COA Page 2

Residual Solvent Analysis

Attribute	Method	Specification	Status
Butanes	GC	<500 ppm	Pass
Ethanol	GC	<500 ppm	Pass
Heptanes	GC	<500 ppm	Pass
Propane	GC	<500 ppm	Pass

Pesticide Analysis

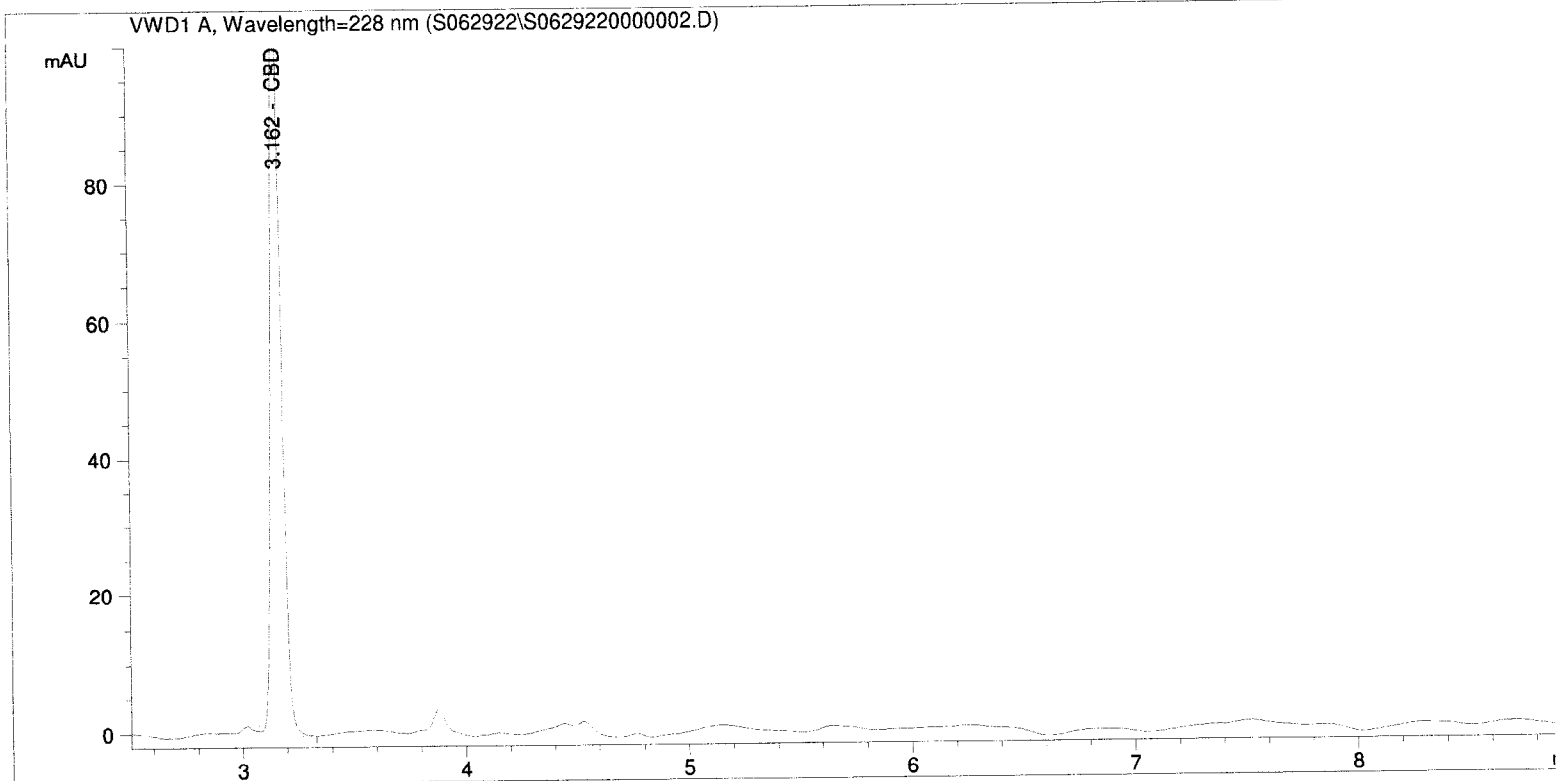
Attribute	Method	Limit	Status
Abamectin	GC-FID	200	Pass
Acequinocyl	GC-FID	4000	Pass
Bifenazate	GC-FID	400	Pass
Bifrenthin	GC-FID	100	Pass
Cyfuthrin	GC-FID	2000	Pass
Cypermethrin	GC-FID	1000	Pass
Daminozide	GC-FID	800	Pass
Dimethomorph	GC-FID	2000	Pass
Eoxazole	GC-FID	400	Pass
Fenhexamid	GC-FID	1000	Pass
Flonicamdi	GC-FID	1000	Pass
Fludioconil	GC-FID	500	Pass
Imidicloprid	GC-FID	500	Pass
Myclobutanil	GC-FID	400	Pass
Paclobutrazol	GC-FID	400	Pass
Piperonyl Butoxid	GC-FID	3000	Pass
Pyrethrins	GC-FID	2000	Pass
Quintozene	GC-FID	800	Pass
Spinetoram	GC-FID	1000	Pass
Spinosad	GC-FID	1000	Pass
Spirotetramat	GC-FID	1000	Pass
Thiamethoxam	GC-FID	400	Pass
Triflozystrobin	GC-FID	1000	Pass
Plant Growth Regulators	GC-FID	50	Pass

QA Approval:		Date:	7/6/2022
--------------	---	-------	----------

```

=====
Acq. Operator   : SF                               Seq. Line :    2
Acq. Instrument : Instrument 1                     Location  : Vial 1
Injection Date  : 6/29/2022 4:03:44 AM           Inj       :    1
                                                    Inj Volume: 5.0 µl

Acq. Method     : C:\CHEM32\1\METHODS\ARCHIVE METHODS\POTENCY_2022.M
Last changed    : 6/29/2022 3:43:02 AM by SF
Analysis Method : C:\CHEM32\1\METHODS\POTENCY_2022.M
Last changed    : 7/4/2022 12:45:25 PM by SF
                  (modified after loading)
Method Info     : Cannabinoid Potency 9 minutes
                  Cal Jan 2022
=====
    
```



ESTD Percent Report

```

=====
Sorted By      : Signal
Calib. Data Modified : Monday, July 04, 2022 12:39:28 PM
Multiplier:    : 1.0000
Dilution:      : 11.1000
Sample Amount: : 11.70000 [mg/ml]
Do not use Multiplier & Dilution Factor with ISTDs
    
```

Signal 1: VWD1 A, Wavelength=228 nm

RetTime [min]	Type	Area mAU *s	Amt/Area	Amount %	Grp	Name
1.627		-	-	-		Ibuprofen IS
2.983		-	-	-		CBG
3.162	VB	366.86847	1.21633e-4	4.233486		CBD
3.393		-	-	-		THCV
4.582		-	-	-		CBN
5.718		-	-	-		d9-THC

RetTime [min]	Type	Area mAU	Amt/Area *s	Amount %	Grp	Name
5.893		-	-	-		d8-THC
6.761		-	-	-		CBL
7.138		-	-	-		CBC
7.664		-	-	-		THCA
12.000		-	-	-		CBT

Totals : 4.233486

1 Warnings or Errors :

Warning : Time reference compound(s) not found

=====
*** End of Report ***



Certificate of Analysis

Powered by Confident Cannabis

Sample: 2111DBL0322.11236
METRC Sample:

PPM

Welby, CO 80229
info@precisionplantmolecules.com

Lic. #

Strain: CBC
Ordered: 11/30/2021; Sampled: 12/01/2021; Completed: 12/09/2021

CBC-21-017

Concentrates & Extracts, Cannabinoid Isolate, Other



Pesticides



Microbials



Mycotoxins



Heavy Metals



Foreign Matter



Solvents

Terpenes

Analyzed by 300.13 GC/FID and GC/MS

<LOQ
Total Terpenes

Compound	Mass %	Mass mg/g
α -Bisabolol	<LOQ	<LOQ
α -Humulene	<LOQ	<LOQ
α -Pinene	<LOQ	<LOQ
α -Terpinene	<LOQ	<LOQ
β -Caryophyllene	<LOQ	<LOQ
β -Myrcene	<LOQ	<LOQ
β -Pinene	<LOQ	<LOQ
Camphene	<LOQ	<LOQ
Caryophyllene Oxide	<LOQ	<LOQ
cis-Nerolidol	<LOQ	<LOQ
cis-Ocimene	<LOQ	<LOQ
δ -3-Carene	<LOQ	<LOQ
δ -Limonene	<LOQ	<LOQ
Eucalyptol	<LOQ	<LOQ
γ -Terpinene	<LOQ	<LOQ
Geraniol	<LOQ	<LOQ
Guaiol	<LOQ	<LOQ
Isopulegol	<LOQ	<LOQ
Linalool	<LOQ	<LOQ
p-Cymene	<LOQ	<LOQ
Terpinolene	<LOQ	<LOQ
trans-Nerolidol	<LOQ	<LOQ
trans-Ocimene	<LOQ	<LOQ

Cannabinoid Relative Concentration

Analyzed by 300.18 UHPLC/PDA

<LOQ
Total THC

<LOQ
Total CBD

NT
Moisture: Not Tested

99.900%
Total Cannabinoids

Compound	Mass %	Mass mg/g	Relative Concentration
CBC	99.900	999.00	
CBCa	<LOQ	<LOQ	
CBD	<LOQ	<LOQ	
CBDa	<LOQ	<LOQ	
CBDV	<LOQ	<LOQ	
CBDVa	<LOQ	<LOQ	
CBG	<LOQ	<LOQ	
CBGa	<LOQ	<LOQ	
CBL	<LOQ	<LOQ	
CBN	<LOQ	<LOQ	
Δ 8-THC	<LOQ	<LOQ	
Δ 9-THC	<LOQ	<LOQ	
THCa	<LOQ	<LOQ	
THCV	<LOQ	<LOQ	
THCVa	<LOQ	<LOQ	

Total THC = 0.877 x THC-A + Δ 9-THC + Δ 8-THC; Total CBD = CBDa * 0.877 + CBD



Benjamin G.M. Chew
Benjamin G.M. Chew, Ph.D.
Laboratory Director

Glen Marquez
Glen Marquez
Quality Control



4439 Polaris Ave
Las Vegas, NV
(702) 728-5180
www.dblabslv.com

This report is considered highly confidential and the sole property of the customer. DB Labs will not discuss any part of this study with personnel other than those authorized by the client. The results described in this report only apply to the samples analyzed. The reported result is based on a sample weight with the applicable moisture content for that sample. LOQ = Limit of Quantitation. Pesticide LOQ = Instrument Limit of Quantitation, NA = Not Analyzed, ND = Not Detected, NR = Not Reported, NT = Not Tested. PGR = Plant Growth Regulator. Unless otherwise stated all quality control samples performed within specifications established by the Laboratory. This product has been tested by DB Labs, LLC (MME# 61887736101164525768) using valid testing methodologies and a quality system as required by Nevada state law. Edibles are picked up prior to final packaging unless otherwise stated. Values reported relate only to the product tested. The uncertainty of measurement associated with the measurement result reported in this certificate is available from the organization upon request. DB Labs makes no claims as to the efficacy, safety or other risks associated with any detected or non-detected levels of any compounds reported herein. This Certificate shall not be reproduced except in full, without the written approval of DB Labs.



Certificate of Analysis

Powered by Confident Cannabis

Sample: 2111DBL0322.11236
METRC Sample:

PPM

Welby, CO 80229
info@precisionplantmolecules.com

Lic. #

Strain: CBC
Ordered: 11/30/2021; Sampled: 12/01/2021; Completed: 12/09/2021

CBC-21-017

Concentrates & Extracts, Cannabinoid Isolate, Other



Pesticides		Pass
Analyzed by 300.1 LC/MS/MS and GC/MS/MS		
Compound	Mass	Status
	PPB	
Abamectin	<LOQ	Pass
Acequinocyl	<LOQ	Pass
Bifenazate	<LOQ	Pass
Bifenthrin	<LOQ	Pass
Cyfluthrin	<LOQ	Pass
Cypermethrin	<LOQ	Pass
Daminozide	<LOQ	Pass
Dimethomorph	<LOQ	Pass
Etoxazole	<LOQ	Pass
Fenhexamid	<LOQ	Pass
Flonicamid	<LOQ	Pass
Fludioxonil	<LOQ	Pass
Imidacloprid	<LOQ	Pass
Myclobutanil	<LOQ	Pass
Pacllobutrazol	<LOQ	Pass
Piperonyl Butoxide	<LOQ	Pass
Pyrethrins	<LOQ	Pass
Quintozene	<LOQ	Pass
Spinetoram	<LOQ	Pass
Spinosad	<LOQ	Pass
Spirotetramat	<LOQ	Pass
Thiamethoxam	<LOQ	Pass
Trifloxystrobin	<LOQ	Pass
Plant Growth Regulators	<LOQ	Pass

Microbials		Not Tested
Analyzed by 300.1 HPLC/qPCR		
Quantitative Analysis	Mass	Status
Qualitative Analysis	Detected or Not Detected	Status

Mycotoxins		Pass
Analyzed by 300.2 Elisa		
Mycotoxin	Mass	Status
	PPB	
Aflatoxins	<LOQ	Pass
Ochratoxin A	10.7	Pass

Heavy Metals		Pass
Analyzed by 300.6 ICP/MS		
Element	Mass	Status
	PPB	
Arsenic	<LOQ	Pass
Cadmium	<LOQ	Pass
Lead	<LOQ	Pass
Mercury	<LOQ	Pass

Residual Solvents		Pass
Analyzed by 300.1 GC/FID and GC/MS		
Compound	Mass	Status
	PPM	
Butanes	<LOQ	Pass
Ethanol	<LOQ	Tested
Heptanes	<LOQ	Pass
Propane	<LOQ	Pass



Benjamin G.M. Chew
Benjamin G.M. Chew, Ph.D.
Laboratory Director

Glen Marquez
Glen Marquez
Quality Control

DB Labs
4439 Polaris Ave
Las Vegas, NV
(702) 728-5180
www.dblabslv.com

This report is considered highly confidential and the sole property of the customer. DB Labs will not discuss any part of this study with personnel other than those authorized by the client. The results described in this report only apply to the samples analyzed. The reported result is based on a sample weight with the applicable moisture content for that sample. LOQ = Limit of Quantitation. Pesticide LOQ = Instrument Limit of Quantitation, NA = Not Analyzed, ND = Not Detected, NR = Not Reported, NT = Not Tested. PGR = Plant Growth Regulator. Unless otherwise stated all quality control samples performed within specifications established by the Laboratory. This product has been tested by DB Labs, LLC (MME# 61887736101164525768) using valid testing methodologies and a quality system as required by Nevada state law. Edibles are picked up prior to final packaging unless otherwise stated. Values reported relate only to the product tested. The uncertainty of measurement associated with the measurement result reported in this certificate is available from the organization upon request. DB Labs makes no claims as to the efficacy, safety or other risks associated with any detected or non-detected levels of any compounds reported herein. This Certificate shall not be reproduced except in full, without the written approval of DB Labs.



Certificate of Analysis

Powered by Confident Cannabis

PPM

Welby, CO 80229
info@precisionplantmolecules.com

Sample: 2111DBL0322.11236
METRC Sample:

Lic. #

Strain: CBC
Ordered: 11/30/2021; Sampled: 12/01/2021; Completed: 12/09/2021

CBC-21-017

Concentrates & Extracts, Cannabinoid Isolate, Other



Pesticides		Pass	
Analyzed by 300.2 LC/MS/MS and GC/MS/MS			
Compound	Mass	Status	
	PPB		
Abamectin	<LOQ	Pass	
Acequinocyl	<LOQ	Pass	
Bifenazate	<LOQ	Pass	
Bifenthrin	<LOQ	Pass	
Cyfluthrin	<LOQ	Pass	
Cypermethrin	<LOQ	Pass	
Daminozide	<LOQ	Pass	
Dimethomorph	<LOQ	Pass	
Etoxazole	<LOQ	Pass	
Fenhexamid	<LOQ	Pass	
Flonicamid	<LOQ	Pass	
Fludioxonil	<LOQ	Pass	
Imidacloprid	<LOQ	Pass	
Myclobutanil	<LOQ	Pass	
Pacllobutrazol	<LOQ	Pass	
Piperonyl Butoxide	<LOQ	Pass	
Pyrethrins	<LOQ	Pass	
Quintozene	<LOQ	Pass	
Spinetoram	<LOQ	Pass	
Spinosad	<LOQ	Pass	
Spirotetramat	<LOQ	Pass	
Thiamethoxam	<LOQ	Pass	
Trifloxystrobin	<LOQ	Pass	
Plant Growth Regulators	<LOQ	Pass	

Microbials		Not Tested	
Analyzed by 300.1 Plating/QPCR			
Quantitative Analysis	Mass	Status	
Qualitative Analysis	Detected or Not Detected	Status	

Mycotoxins		Pass	
Analyzed by 300.2 Elisa			
Mycotoxin	Mass	Status	
	PPB		
Aflatoxins	<LOQ	Pass	
Ochratoxin A	10.7	Pass	

Heavy Metals		Pass	
Analyzed by 300.8 ICP/MS			
Element	Mass	Status	
	PPB		
Arsenic	<LOQ	Pass	
Cadmium	<LOQ	Pass	
Lead	<LOQ	Pass	
Mercury	<LOQ	Pass	

Residual Solvents		Pass	
Analyzed by 300.1D GC/FID and GC/MS			
Compound	Mass	Status	
	PPM		
Butanes	<LOQ	Pass	
Ethanol	<LOQ	Tested	
Heptanes	<LOQ	Pass	
Propane	<LOQ	Pass	



Benjamin G.M. Chew
Benjamin G.M. Chew, Ph.D.
Laboratory Director

Glen Marquez
Glen Marquez
Quality Control

DB Labs
4439 Polaris Ave
Las Vegas, NV
(702) 728-5180
www.dblabslv.com

This report is considered highly confidential and the sole property of the customer. DB Labs will not discuss any part of this study with personnel other than those authorized by the client. The results described in this report only apply to the samples analyzed. The reported result is based on a sample weight with the applicable moisture content for that sample. LOQ = Limit of Quantitation. Pesticide LOQ = Instrument Limit of Quantitation, NA = Not Analyzed, ND = Not Detected, NR = Not Reported, NT = Not Tested. PGR = Plant Growth Regulator. Unless otherwise stated all quality control samples performed within specifications established by the Laboratory. This product has been tested by DB Labs, LLC (MME# 61887736101164525768) using valid testing methodologies and a quality system as required by Nevada state law. Edibles are picked up prior to final packaging unless otherwise stated. Values reported relate only to the product tested. The uncertainty of measurement associated with the measurement result reported in this certificate is available from the organization upon request. DB Labs makes no claims as to the efficacy, safety or other risks associated with any detected or non-detected levels of any compounds reported herein. This Certificate shall not be reproduced except in full, without the written approval of DB Labs.